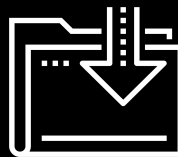
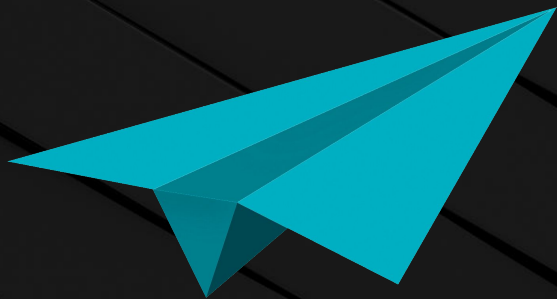


Client-Side Storage

Skills Bootcamp in Front-End Web Development

Lesson 6.3





Office Hours

30 Minutes

The background is a dark charcoal gray with a series of parallel diagonal lines running from the top-left to the bottom-right. Overlaid on this are several teal-colored geometric shapes: a large central triangle pointing right, a smaller triangle to its left, and a square to its right. Scattered around these shapes are various white line-art symbols, including a plus sign, a minus sign, a circle with a dot, a circle with a horizontal line, a circle with a vertical line, a circle with a diagonal line, a circle with a cross, a circle with a dot, a circle with a horizontal line, a circle with a vertical line, a circle with a diagonal line, a circle with a cross, a circle with a dot, a circle with a horizontal line, a circle with a vertical line, a circle with a diagonal line, and a circle with a cross.

WELCOME

Today's Objectives

By the end of class today, you will:



Use local storage and session storage.



Describe the differences between the two.



Identify when client-side storage is the right solution.



Persist data using client-side storage.

Client-Side Storage

Preview Client-Side Storage

Deploy the todo list in your browser.



We can add items to our todo list.



We can complete items on our todo list.



When we close the browser tab and reopen the application, we see that our todos are still there. Magic!

Add a Todo:

What needs to be done?

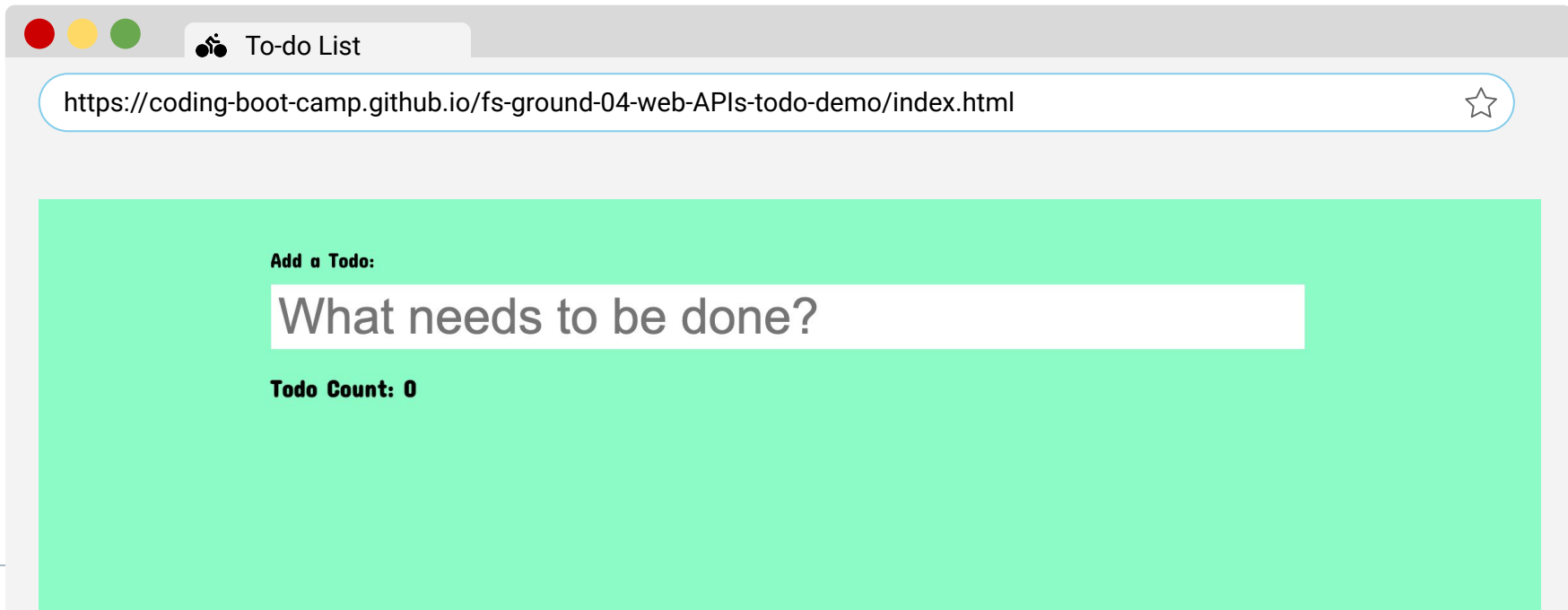
Todo Count: 0



**When we submit an item to our
todo list, where does it go?**

Preview Client-Side Storage

So far, none of the applications we've worked on have had any kind of persistent data. Our items are stored in the browser. When an application was refreshed in the browser, all of its state was reset.



A black silhouette of a person standing on the peak of a jagged mountain, holding a flag aloft. A dashed white line on the mountain's slope indicates a path or trail. The background is a light blue geometric pattern of triangles.

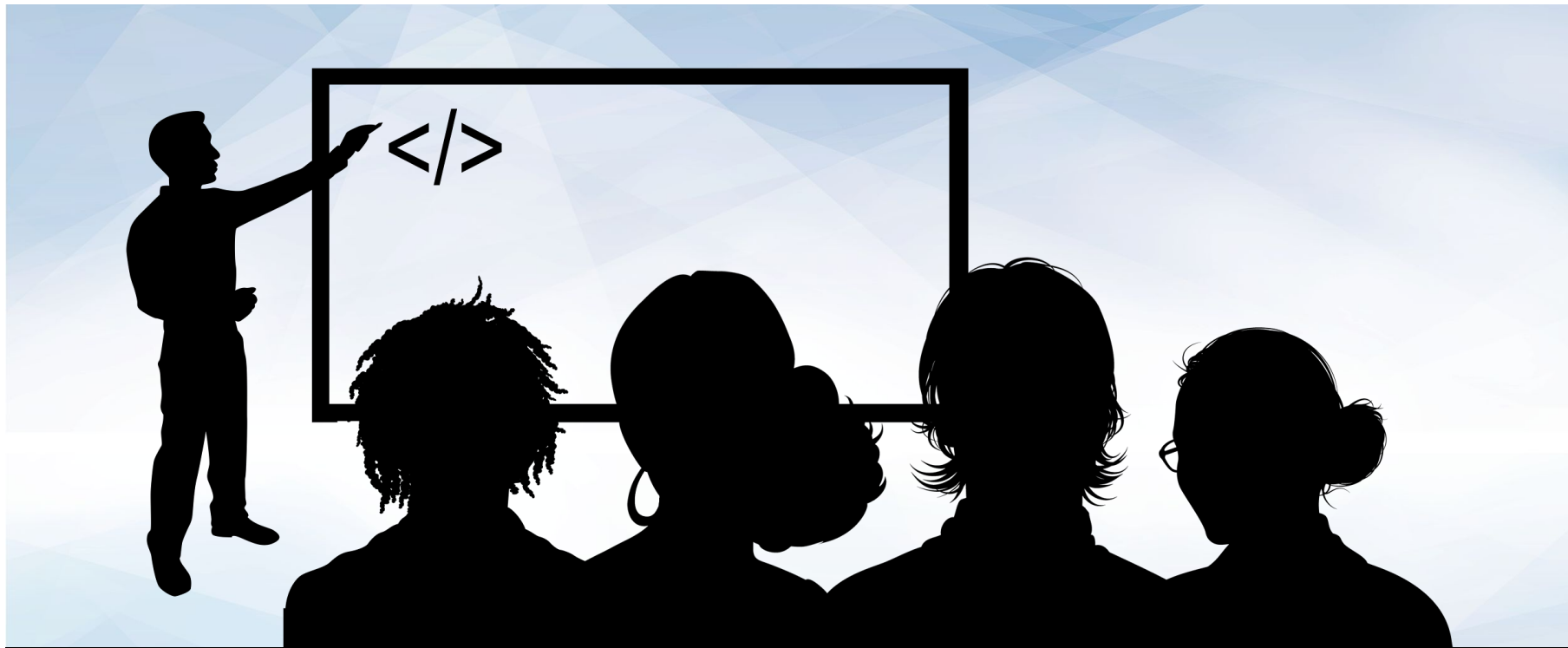
Student Activity: Local Storage

Suggested Time:
15 Minutes





Time's Up! Let's Review.



Instructor Demonstration

Local Storage with Uh-oh (10 mins)

A black silhouette of a person standing on a mountain peak, holding a flag. The mountain is composed of several dark, angular shapes. A dashed white line runs up the slope of the mountain. The background is a light blue and white geometric pattern.

Student Activity: Local Storage With Objects


Suggested Time:
15 Minutes





Time's Up! Let's Review.

ToDo List

A black silhouette of a person standing on the peak of a jagged mountain, holding a flag high. A dashed white line on the mountain's slope indicates a path or trail. The background is a light blue geometric pattern.

Student Activity: Render Todos

Suggested Time:
15 Minutes





Time's Up! Let's Review.

A black silhouette of a person standing on the peak of a jagged mountain. The person is holding a flag aloft with their right hand. A dashed white line runs up the side of the mountain, suggesting a path or trail. The background is a light blue and white geometric pattern.

Student Activity: Complete Todos

Suggested Time:
15 Minutes






Time's Up! Let's Review.



Break

A black silhouette of a person standing on a jagged mountain peak, holding a flag aloft. A dashed white line runs up the side of the mountain. The background is a light blue geometric pattern.

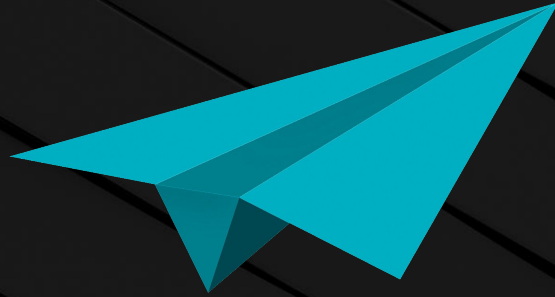
Student Activity: Word Guess Game

Suggested Time:
45 Minutes





Time's Up! Let's Review.



Office Hours

30 Minutes

*The
End*